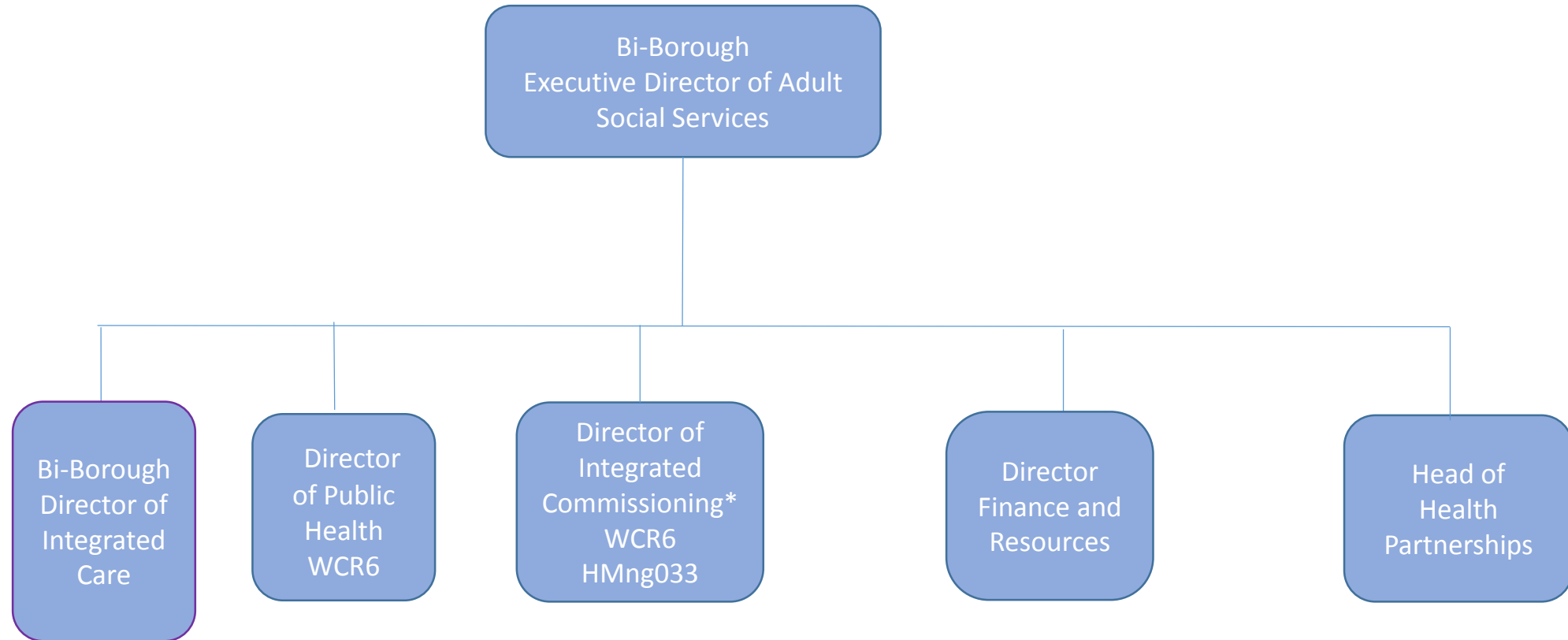
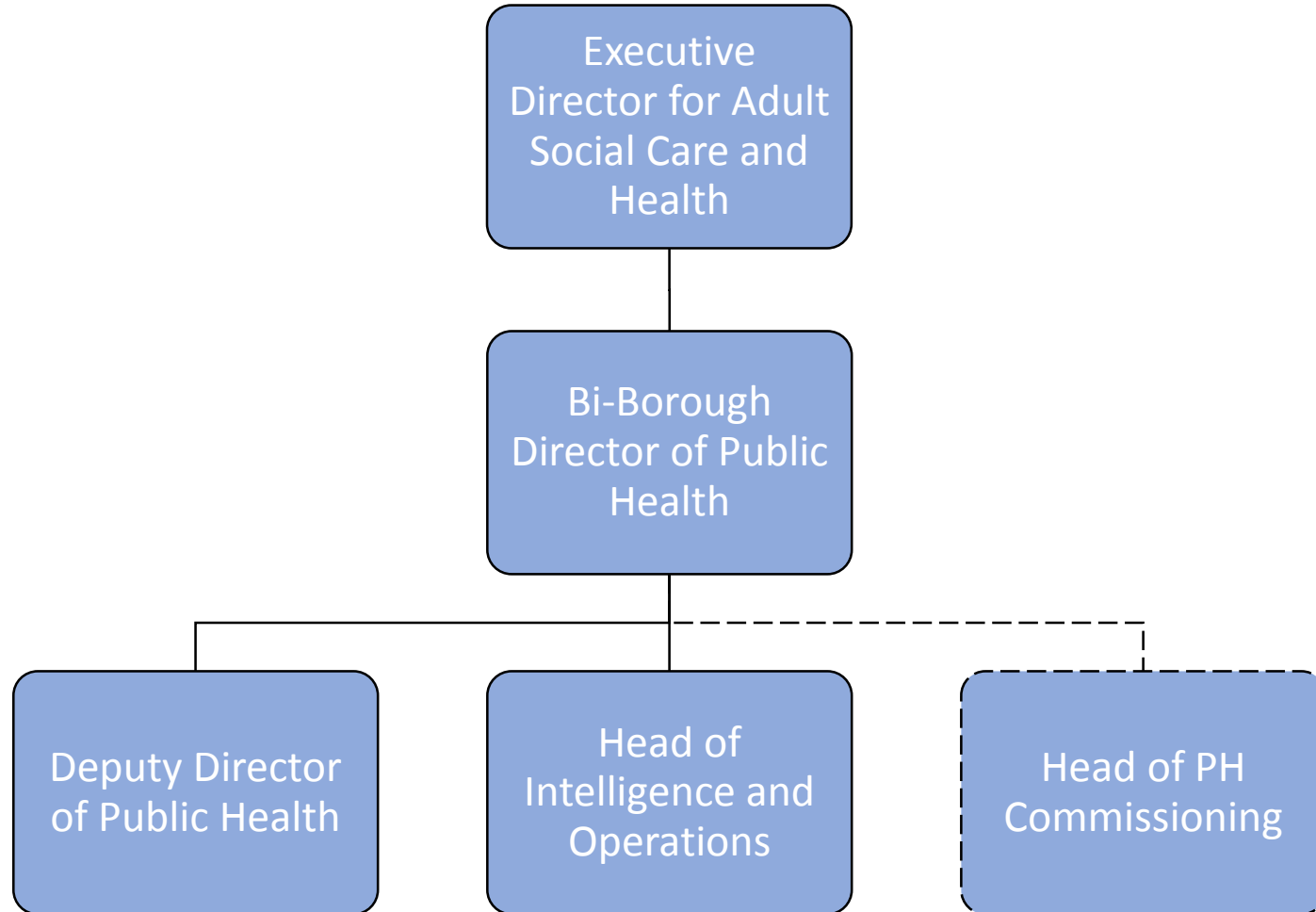


ASC Senior Management Team



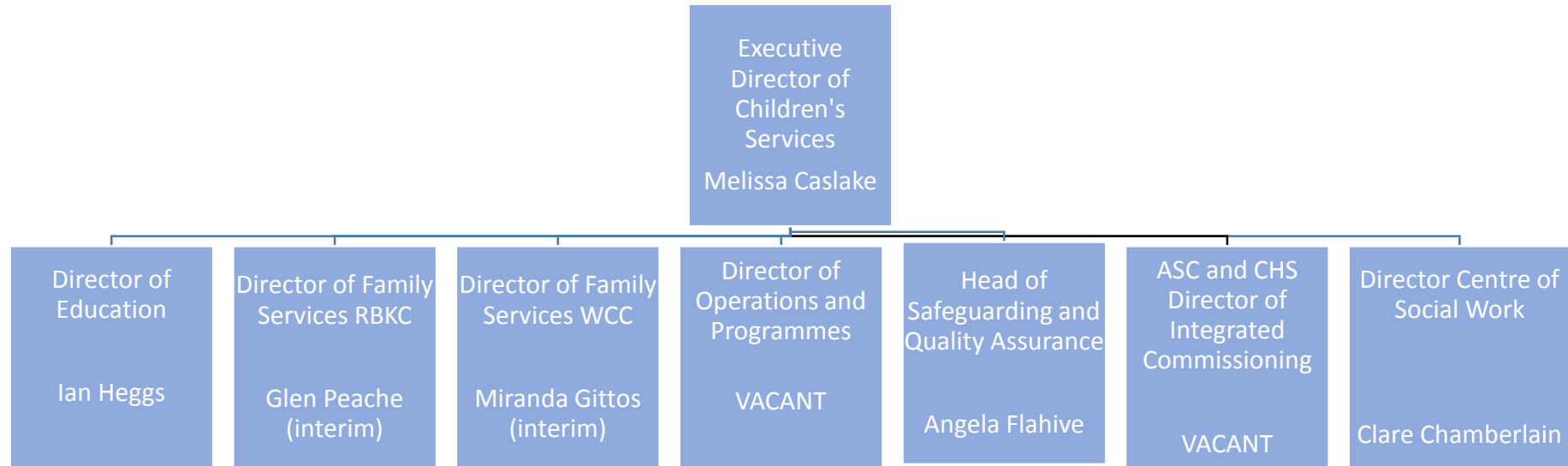
* Dual reporting line to Director of Children's Services

Public Health SLT

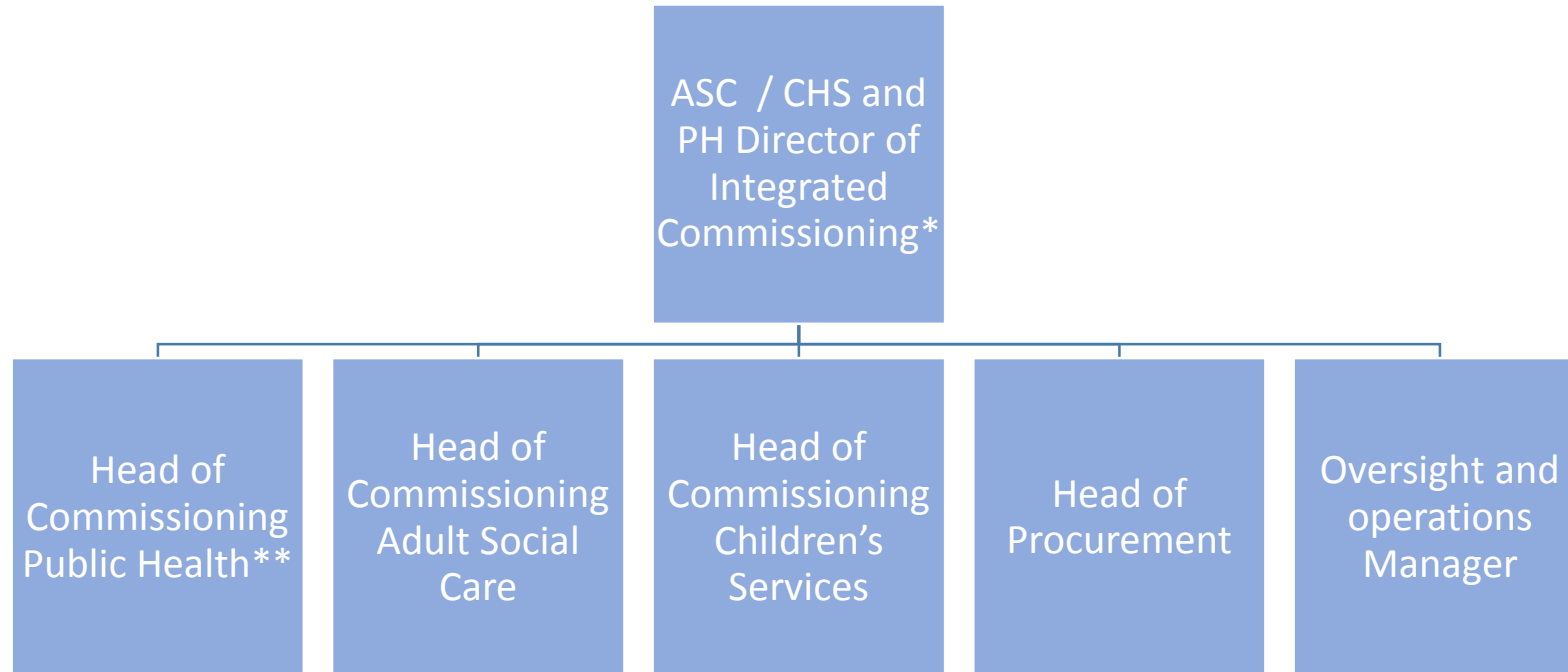


----- Matrix management

Children's Services SLT



Integrated Commissioning



*ASC / CHS Dir. of Integrated Commissioning is also featured in the ASC / CHS Structures on Slides 1 and 3

**Head of Commissioning Public Health is also featured in the PH Structure on Slide 2